

Repertoire of colours

CALACATTA GOLD

The Calacatta Gold collection is where we find beautiful veining patterns of luxury marble in porcelain stoneware tiles to add glamour and timeless elegance to the interior. Tiles in white and grey colours, with slight gold tinting, brighten and revitalise the arranged space, and in combination with distinctive accents of the decors, add a unique character to the interior. An appropriate selection of the Calacatta Gold tile format gives the impression of a monolithic block of marble.

SIZES

120 x 280
120 x 120
60 x 120
30 x 120
60 x 60

 wall tile  floor tile  frost resistance  porcelain tile
 rectified tile  matt surface  polished finish



CALACATTA GOLD

An appropriate selection of the Calacatta Gold tile format gives the impression of a uniform surface that resembles a monolithic block of marble.



Calacatta Gold

matt

119,7 × 119,7 cm
| 45593



☞ 0,8
R9
PEI ●●●●○
12

59,7 × 119,7 cm
| 45395



☞ 0,8
R9
PEI ●●●●○
37

29,7 × 119,7 cm
| 44954



☞ 0,8
R9
PEI ●●●●○
74

59,7 × 59,7 cm
| 45210



☞ 0,8
R9
PEI ●●●●○
74

mosaic

29,7 × 29,7 cm
| 39522



☞ 0,8
R10
PEI ●●●●○

baseboard

8 × 59,7 cm
| 39348



☞ 0,8

decor

59,7 × 119,7 cm
| 45432 (A) / 45449 (B)



☞ 0,8
R9
PEI ●●●●○
6

polished

119,7 × 119,7 cm
| 47023



☞ 0,8
PEI ●●●●○
12

59,7 × 119,7 cm
| 46637



☞ 0,8
PEI ●●●●○
37

29,7 × 119,7 cm
| 47245



☞ 0,8
PEI ●●●●○
74

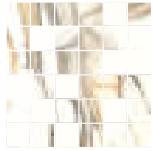
59,7 × 59,7 cm
| 46828



☞ 0,8
PEI ●●●●○
74

mosaic

29,7 × 29,7 cm
| 39614



☞ 0,8
PEI ●●●●○

baseboard

8 × 59,7 cm
| 39430



☞ 0,8

decor

59,7 × 119,7 cm
| 47221 (A) / 47238 (B)



☞ 0,8
PEI ●●●●○
6

119,7 × 279,7 cm
| 45777



☞ 0,6
R9
PEI ●●●●○
8

119,7 × 279,7 cm
| 47504



☞ 0,6
PEI ●●●●○
8

Packaging

	8×59,7×0,8	29,7×29,7×0,8	59,7×59,7×0,8	29,7×119,7×0,8	59,7×119,7×0,8	119,7×119,7×0,8	119,7×279,7×0,6
Pieces in the box	8	5	4	4	2	1	*
m ² in the box	-	-	1,43	1,42	1,43	1,43	*
Box weight [kg]	7,5	9,15	27,3	27,1	27,31	27,31	*

* The tiles are packed in crates. More information available on a table, on page 114.