

# POP

BICOTTURA DA RIVESTIMENTO  
DOUBLE-FIRED WALL TILE



# POP



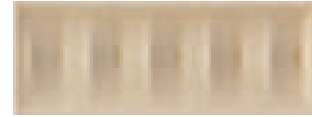
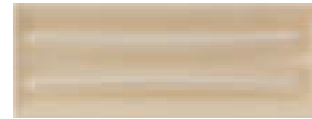
**POP B**  
12,5X33,3-4.9"X13.1"



**B.POP B**  
3X33,3-1.8"X13.1"



**COOL B**  
12,5X33,3-4.9"X13.1"



**SPLASH B1**  
12,5X33,3-4.9"X13.1"



**POP J**  
12,5X33,3-4.9"X13.1"



**B.POP J**  
3X33,3-1.8"X13.1"



**COOL J**  
12,5X33,3-4.9"X13.1"



**SPLASH J1**  
12,5X33,3-4.9"X13.1"



**POP O**  
12,5X33,3-4.9"X13.1"



**B.POP O**  
3X33,3-1.8"X13.1"



**COOL O**  
12,5X33,3-4.9"X13.1"



**SPLASH O1**  
12,5X33,3-4.9"X13.1"



**POP DM**  
12,5X33,3-4.9"X13.1"



**B.POP DM**  
3X33,3-1.8"X13.1"



**COOL DM**  
12,5X33,3-4.9"X13.1"



**SPLASH DM1**  
12,5X33,3-4.9"X13.1"



**POP R**  
12,5X33,3-4.9"X13.1"



**B.POP R**  
3X33,3-1.8"X13.1"



**COOL R**  
12,5X33,3-4.9"X13.1"



**SPLASH R1**  
12,5X33,3-4.9"X13.1"



**CARTOON 1 MIX**  
12,5X33,3-4.9"X13.1"



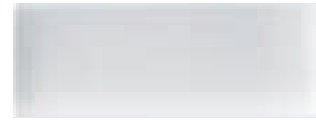
**CARTOON 2 MIX**  
12,5X33,3-4.9"X13.1"

# POP

BICOTTURA DA RIVESTIMENTO  
DOUBLE-FIRED WALL TILE



# POP



**POP W**  
12,5X33,3-4.9"X13.1"



**B.POP W**  
3X33,3-1.8"X13.1"



**POP G**  
12,5X33,3-4.9"X13.1"



**B.POP G**  
3X33,3-1.8"X13.1"



**POP N**  
12,5X33,3-4.9"X13.1"



**B.POP N**  
3X33,3-1.8"X13.1"



**POP V**  
12,5X33,3-4.9"X13.1"



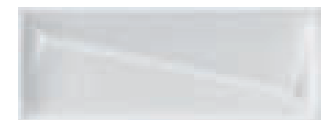
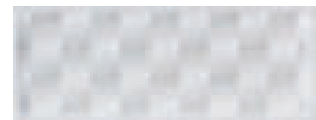
**B.POP V**  
3X33,3-1.8"X13.1"



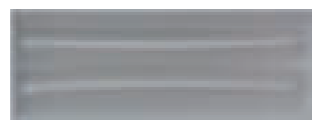
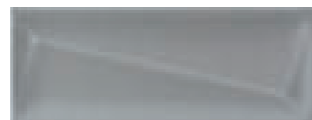
**POP F**  
12,5X33,3-4.9"X13.1"



**B.POP F**  
3X33,3-1.8"X13.1"



**COOL W**  
12,5X33,3-4.9"X13.1"



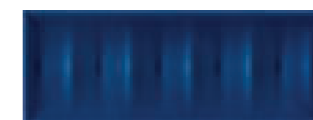
**COOL G**  
12,5X33,3-4.9"X13.1"



**COOL N**  
12,5X33,3-4.9"X13.1"



**COOL V**  
12,5X33,3-4.9"X13.1"



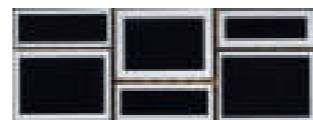
**COOL F**  
12,5X33,3-4.9"X13.1"



**SPLASH W1**  
12,5X33,3-4.9"X13.1"



**SPLASH G1**  
12,5X33,3-4.9"X13.1"



**SPLASH N1**  
12,5X33,3-4.9"X13.1"



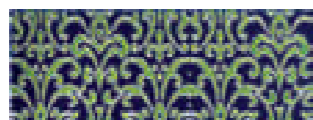
**SPLASH V1**  
12,5X33,3-4.9"X13.1"



**SPLASH F1**  
12,5X33,3-4.9"X13.1"



**WOW 1**  
12,5X33,3-4.9"X13.1"



**WOW 2**  
12,5X33,3-4.9"X13.1"



**WOW 3**  
12,5X33,3-4.9"X13.1"



**WOW 4**  
12,5X33,3-4.9"X13.1"



**WOW 5**  
12,5X33,3-4.9"X13.1"



**WOW 6**  
12,5X33,3-4.9"X13.1"



**WOW 7**  
12,5X33,3-4.9"X13.1"



**WOW 8**  
12,5X33,3-4.9"X13.1"

# POP

## SIMBOLOGIA SYMBOLS

### INDICAZIONI D'USO. INDICATIONS FOR USE.



RIVESTIMENTO.  
WALL TILES.

### DESTINAZIONI D'USO. SUGGESTED APPLICATIONS.



ABITAZIONI.  
DOMESTIC PURPOSE.

### STRUTTURA. STRUCTURE.



STUTTURATO.  
SLATE CUT.

### FINITURA. FINISH.



NATURALE.  
NATURAL.

### ASPETTO SUPERFICIALE. SURFACE LOOK.



LUCIDO.  
GLOSSY.

### CARATTERISTICHE DI VENDITA. SALES CHARACTERISTICS.



PRODOTTO VENDUTO AL PEZZO  
PRODUCT SOLD PER ITEM

### STONALIZZAZIONE. SHADE VARIATION.

V1

## CARATTERISTICHE TECNICHE BICOTTURA / DOUBLE FIRING TECHNICAL SPECIFICATIONS UNI EN 14411 (ISO 13006) - BIII (APPENDICE L)

CARATTERISTICA SPECIFICATION	METODO DI PROVA TEST METHODS	REQUISITI PREVISTI DALLA NORMA REQUIREMENTS IN ACCORDANCE TO THE STANDARDS	VALORE MEDIO AVERAGE VALUE
<b>DIMENSIONI E ASPETTO</b> DIMENSIONS AND APPEARANCE	ISO 10545-2	<b>PROSPETTO L.1</b> PROSPECT L.1	<b>CONFORME</b> COMPLIANT
<b>ASSORBIMENTO D'ACQUA</b> WATER ABSORPTION	ISO 10545-3	> 10%	> 10%
<b>RESISTENZA A FLESSIONE</b> FLEXURAL RESISTANCE	ISO 10545-4	<b>PESSORE - THICKNESS</b> > 7,5 mm: min. 12 N/mm <sup>2</sup> <b>PESSORE - THICKNESS</b> ≤ 7,5 mm: min. 15 N/mm <sup>2</sup>	>17 N/mm <sup>2</sup>
<b>SFORZO DI ROTTURA</b> MODULUS OF RUPTURE		<b>PESSORE - THICKNESS</b> ≥ 7,5 mm: min. 600 N <b>PESSORE - THICKNESS</b> < 7,5 mm: min. 200 N	<b>CONFORME</b> COMPLIANT
<b>COEFFICIENTE DILATAZIONE TERMICA LINEARE (α)</b> LINEAR EXPANSION THERMIC COEFFICIENT	ISO 10545-8	<b>METODO DISPONIBILE</b> AVAILABLE ON REQUEST	≤ 7x10 <sup>-6</sup> °C <sup>-1</sup>
<b>RESISTENZA AGLI SBALZI TERMICI</b> RESISTANCE TO SUDDEN TEMPERATURE CHANGES	ISO 10545-9	<b>METODO DISPONIBILE</b> AVAILABLE ON REQUEST	<b>RESISTE</b> RESISTANT
<b>RESISTENZA AL CAVILLO</b> CRAZING RESISTANCE	ISO 10545-11	<b>RICHIESTA</b> ALWAYS TESTED	<b>RESISTE</b> RESISTANT
<b>PRODOTTI CHIMICI AD USO DOMESTICO ED ADDITIVI PER PISCINA</b> HOUSEHOLD CHEMICALS AND SWIMMING POOL WATER CLEANSERS		min. B МИН. B	min. B МИН. B
<b>ACIDI ED ALCALI A BASSA CONCENTRAZIONE</b> ACIDS AND LOW CONCENTRATION ALKALIS	ISO 10545-13	<b>METODO DISPONIBILE</b> AVAILABLE ON REQUEST	<b>METODO DISPONIBILE</b> AVAILABLE ON REQUEST
<b>ACIDI ED ALCALI AD ALTA CONCENTRAZIONE</b> ACIDS AND HIGH CONCENTRATION ALKALIS		<b>METODO DISPONIBILE</b> AVAILABLE ON REQUEST	<b>METODO DISPONIBILE</b> AVAILABLE ON REQUEST
<b>RESISTENZA ALLE MACCHIE</b> STAIN RESISTANCE	ISO 10545-14	min. 3 МИН. 3	min. 3 МИН. 3